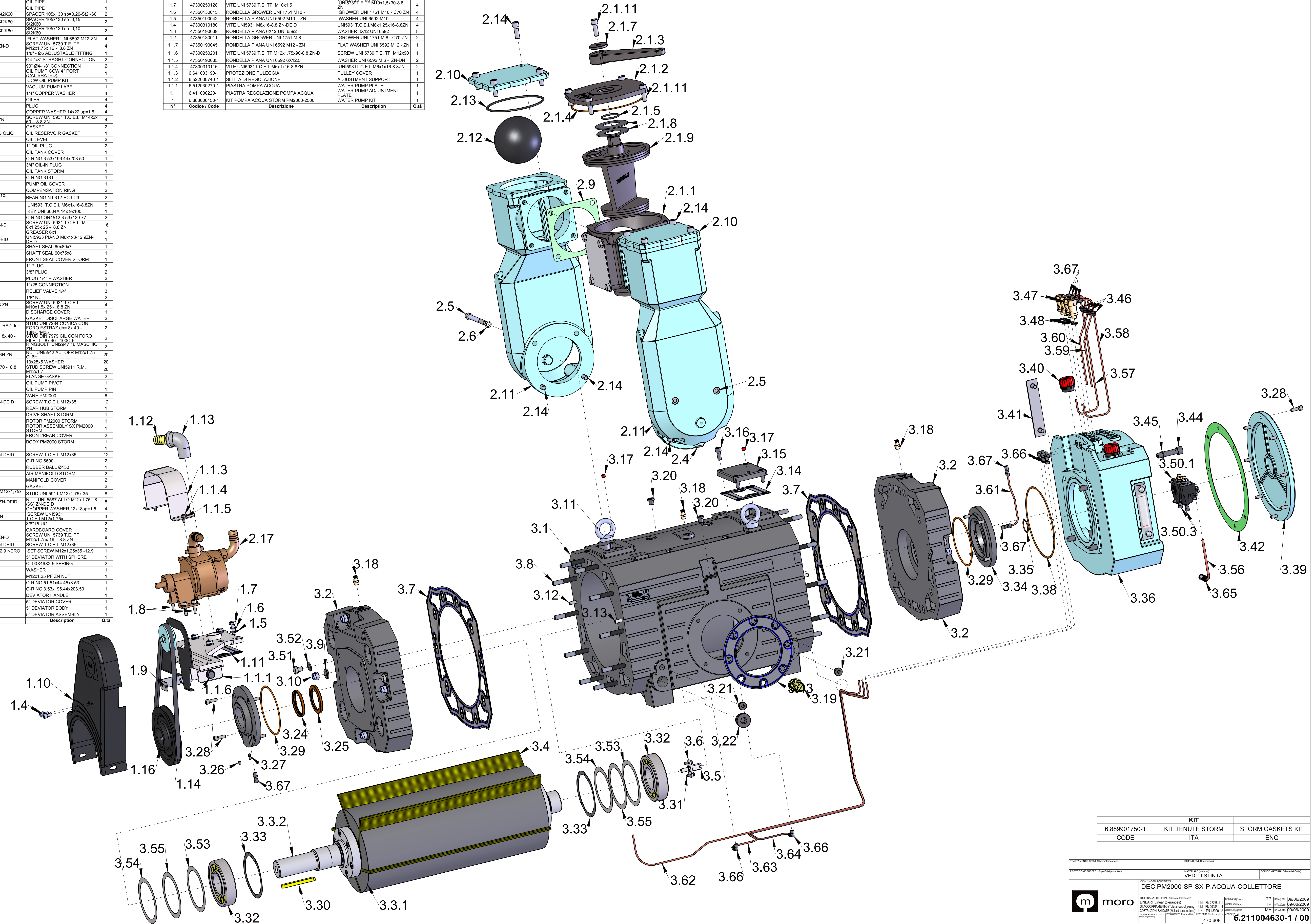


3.68	6.92200000-1	FASCETTA RIVESTITA IN GOMMA D=79	D=79 CLAMP	1
3.67	6.92400305-2	RACCORDO DIRITTO Ø4-1/8"	Ø4-1/8" STRAIGHT CONNECTION	7
3.66	6.92401050-2	RACCORDO 90° Ø4-1/8"	90° Ø4-1/8" CONNECTION	5
3.65	6.64450000-2	FILTRO OLIO	OIL FILTER	1
3.64	6.676100730-1	TUBO OLIO PM2000 STORM	PM2000 STORM OIL PIPE	1
3.63	6.676100720-1	TUBO OLIO PM2000 STORM	PM2000 STORM OIL PIPE	1
3.62	6.676100710-1	TUBO OLIO MANDATA PM2000 STORM	PM2000 STORM OIL PIPE	1
3.61	6.676100670-1	TUBO OLIO	OIL PIPE	1
3.60	6.676100660-1	TUBO OLIO	OIL PIPE	1
3.59	6.676100650-1	TUBO OLIO	OIL PIPE	1
3.58	6.676100640-1	TUBO OLIO	OIL PIPE	1
3.57	6.676100630-1	TUBO OLIO	OIL PIPE	1
3.56	6.676100710-1	TUBO OLIO ASPIRAZIONE	OIL PIPE	1
3.55	47350010036	RONDELLA DI SPESSE 105x130 sp=0,20-SI2K60	SPACER 105x130 sp=0,20-SI2K60	2
3.54	47350010035	RONDELLA DI SPESSE 105x130 sp=0,15-SI2K60	SPACER 105x130 sp=0,15-SI2K60	2
3.53	47350010034	RONDELLA DI SPESSE 105x130 sp=0,10-SI2K60	SPACER 105x130 sp=0,10-SI2K60	2
3.52	47350190045	RONDELLA PIANA UNI 6592 M12 - ZN	FLAT WASHER UNI 6592 M12-ZN	4
3.51	47300250161	VITE UNI 5739 T.E. TF M12x1,75x16-8.8 ZN-D	SCREW UNI 5739 T.E. TF M12x1,75 - 8.8 ZN	4
3.50.4	6.1012260-9-2	RACCORDO ORIENTABILE 1/8" - Ø6	1/8" - Ø6 ADJUSTABLE FITTING	1
3.50.3	6.92400305-2	RACCORDO DIRITTO Ø4-1/8"	Ø4-1/8" STRAIGHT CONNECTION	2
3.50.2	6.92401050-2	RACCORDO 90° Ø4-1/8"	90° Ø4-1/8" CONNECTION	2
3.50.1	6.62400300-1	POMPA OLIO STORM SX 4 MANDATE	OIL PUMP COW 4 PORT CALIBRATED	1
3.50	6.822700400-1	KIT POMPA OLIO SX STORM	COW OIL PUMP KIT	1
3.49	6.1046708-7-2	TARGHETTA DECOMPRESSORI	VACUUM PUMP LABEL	1
3.48	47350160033	RONDELLA RAME 1/4"	1/4" COPPER WASHER	4
3.47	6.453300140-1	OLIAIORE USCITA	OILER	1
3.46	6.64450000-2	FILTRO OLIO	OIL FILTER	1
3.45	47350160039	RONDELLA PIANA 14x22 sp=1,5 - RAME	COPPER WASHER 14x22 sp=1,5	4
3.44	47300310389	VITE UNI 5931 T.C.E.I. M14x26 - 8.8 ZN	SCREW UNI 5931 T.C.E.I. M14x26 - 8.8 ZN	4
3.43	6.680600970-1	GUARNIZIONE	GASKET	2
3.42	6.680600720-1	GUARNIZIONE COPERCHIO SERBATOIO OLIO	OIL RESERVOIR GASKET	1
3.41	6.965038101-2	SPINA LIVELLO A COLONNA	OIL LEVEL	2
3.40	6.92700605-2	TAPPO CARICO OLIO 1"	1" OIL PLUG	2
3.39	6.663301650-1	COPERCHIO SERBATOIO OLIO	OIL TANK COVER	1
3.38	6.1009213-3-2	ANELLO OR 3.53x196.44x203.50	O-RING 3.53x196.44x203.50	1
3.37	6.965038101-2	TAPPO CARICO OLIO 3/4"	3/4" OIL PLUG	1
3.36	6.613000080-1	SERBATOIO OLIO STORM	OIL TANK STORM	1
3.35	6.921003517-2	ANELLO OR-3131	O-RING 3131	1
3.34	6.663400780-1	FLANGIA SUPPORTO POMPA OLIO	PUMP OIL COVER	1
3.33	6.963005003-2	ANELLO COMPENSAZIONE	COMPENSATION RING	2
3.32	6.9310001131-1	CUSCINETTO RULLI CILINDRICI 312-ECJ-C3	BEARING NJ-312-ECJ-C3	2
3.31	47300310116	VITE UNI5931T.C.E.I. M6x1x16-8.8ZN	UNI5931T.C.E.I. M6x1x16-8.8ZN	5
3.30	47410010087	LINGUETTA UNI 6604A 14x 9x100	KEY UNI 6604A 14x 9x100	1
3.29	6.921003564-1	ANELLO OR4512 3.53x120.77 (VITON)	O-RING OR4512 3.53x120.77	2
3.28	47300310190	VITE UNI 5931 T.C.E.I. M6x1,25x25-8.8 ZN-D	SCREW UNI 5931 T.C.E.I. M6x1,25x25 - 8.8 ZN	16
3.27	47630010005	INGRESSO A SFERA M6x1	GREASER 6x1	1
3.26	47310040016	GRANO UNI5923PIANOM6x1x8-12.9ZN-DEID	UNI5923 PIANO M6x1x8-12.9ZN-DEID	1
3.25	6.921027069-1	ANELLO TENUTA 60x80x7 VITON	SHAFT SEAL 60x80x7	1
3.24	6.921027068-1	ANELLO TENUTA 60x75x8 VITON	SHAFT SEAL 60x75x8	1
3.23	6.663400780-1	FLANGIA PORTATELUTE STORM	FRONT SEAL COVER STORM	1
3.22	6.925070054-1	TAPPO 1" + RONDELLA	1" PLUG	2
3.21	6.925070051-1	TAPPO 3/8" + RONDELLA	3/8" PLUG	2
3.20	6.925070050-1	TAPPO 1/4" + RONDELLA	PLUG 1/4" + WASHER	2
3.19	6.925044005-2	RACCORDO PIGOMMA DIRITTO 1/2x25	1/2x25 CONNECTION	1
3.18	6.925034005-1	RUBINETTO DI SFILATO 1/4" GAS	RELIEF VALVE 1/4"	1
3.17	6.925070000-2	TAPPO 1/8" GAS CONICO	1/8" NUT	2
3.16	47300310248	VITE UNI 5931 T.C.E.I. M10x1,5x25 - 8.8 ZN	SCREW UNI 5931 T.C.E.I. M10x1,5x25 - 8.8 ZN	4
3.15	6.663400800-1	COPERCHIO SCARICO	DISCHARGE COVER	1
3.14	6.680600891-1	GUARNIZIONE SCARICO ACQUA	GASKET DISCHARGE WATER	2
3.13	47370190004	SPINA UNI 7284 CONICA CON FORO ESTRAZ dn=8x40 - 18NCG-M5	SPUD DIN 7284 CONIC CON FORO ESTRAZ dn=8x40 - 18NCG	2
3.12	47370040017	SPINA DIN 7979 OIL CON FORO FILETT 8x40 - 18NCG	SPUD DIN 7979 OIL CON FORO FILETT 8x40 - 18NCG	2
3.11	47530070008	GOLFARO UNI2947 16 MASCHIO ZN	RINGBOLT UNI2947 16 MASCHIO ZN	2
3.10	47320130008	DADO UNI 5542 AUTOFR M12x1,75 - CL. 6H ZN	NUT UNIS542 AUTOFR M12x1,75-CL.6H	20
3.9	6.683001650-1	RONDELLA BISELLATA 13x28x5	13x28x5 WASHER	20
3.8	47310190014	FRIGONIERO UNI 5911 R.M. M12x1,75x 70 - 8.8 NERO	STUD SCREW UNI5911 R.M. M12x1,7	20
3.7	6.680600881-1	GUARNIZIONE FLANGIA	FLANGE GASKET	2
3.6	6.612041210-1	FERMO PERNO POMPA OLIO	OIL PUMP PIN	1
3.5	6.621015400-1	PERNO POMPA OLIO	OIL PUMP PIN	1
3.4	6.657501240-1	LAMELLA PM2000	VANE PM2000	6
3.34	47300310316	VITE UNI5931 T.C.E.I. M12x1,75x35-8.8ZN-DEID	SCREW T.C.E.I. M12x35	12
3.33	6.611007790-1	MOZZO POSTERIORE STORM	REAR HUB STORM	1
3.32	6.611007770-1	MOZZO ANTERIORE STORM	DRIVE SHAFT STORM	1
3.31	6.654001250-1	ROTORE PM2000 STORM	ROTOR PM2000 STORM	1
3.3	6.470300360-1	ASSIEME ROTORE SX PM2000 STORM	ROTOR ASSEMBLY SX PM2000	1
3.2	6.610402010-1	FLANGIA ANTI-POST	FRONT/REAR COVER	2
3.1	6.662401000-1	CORPO PM2000 STORM	BODY PM2000 STORM	1
3	6.211004840-1	DEC PM2000-SP-SX	DEC PM2000-SP-SX	1
2.14	47300310316	VITE UNI5931 T.C.E.I. M12x1,75x35-8.8ZN-DEID	SCREW T.C.E.I. M12x35	12
2.13	6.921003212-2	ANELLO OR6600 NBR	O-RING 6600	2
2.12	6.693500100-1	SFERA Ø130	RUBBER BALL Ø130	1
2.11	6.626300290-1	COLLETTORE ARIA STORM	AIR MANIFOLD STORM	2
2.10	6.663301670-1	COPERCHIO COLLETTORE ARIA	MANIFOLD COVER	2
2.9	6.1009183-9-2	GUARNIZIONE	GASKET	2
2.8	47310190010	FRIGONIERO UNI 5911 RADICE MEDIA M12x1,75x 35 - 8.8 NERO	STUD UNI 5911 M12x1,75x 35 - 8.8 NERO	8
2.7	47320160022	DADO UNI 5587 ALTO M12x1,75 - 8 (RS) ZN-DEID	NUT UNI 5587 ALTO M12x1,75 - 8 (RS) ZN-DEID	8
2.6	47350160028	RONDELLA PIANA 12x18sp=1,5 - RAME	COPPER WASHER 12x18sp=1,5	4
2.5	47300310358	VITE UNI5931 T.C.E.I. M12x1,75x120-8.8ZN	SCREW UNI5931 T.C.E.I. M12x1,75x120 - 8.8 ZN	4
2.4	6.925070051-1	TAPPO 3/8" + RONDELLA	3/8" PLUG	2
2.3	6.1009187-9-2	COPERCHIO CARTONE	CARDBOARD COVER	2
2.2	47300250161	VITE UNI 5739 T.E. TF M12x1,75x16-8.8 ZN-D	SCREW UNI 5739 T.E. TF M12x1,75x16 - 8.8 ZN	8
2.1.11	47300310316	VITE UNI5931 T.C.E.I. M12x1,75x35-8.8ZN-DEID	SCREW T.C.E.I. M12x35	5
2.1.10	47310040071	GRANO UNI 5923 PIANO M12x1,25x35-12.9 NERO	SET SCREW M12x1,25x35 - 12.9 N	1
2.1.9	6.526400000-1	DEVIATORE 5" CON SFERA	5" DEVIATOR WITH SPHERE	1
2.1.8	6.964061016-2	MOLLA A TAZZA Ø=90x46x2.5	Ø=90x46x2.5 SPRING	2
2.1.7	6.683000620-2	RONDELLA	WASHER	1
2.1.6	6.1013093-7-2	DADO ES. M12x1,25 PF ZN	M12x1,25 PF ZN NUT	1
2.1.5	6.921003116-2	ANELLO OR 51.51x44.45x3.53	O-RING 51.51x44.45x3.53	1
2.1.4	6.1009213-3-2	ANELLO OR 3.53x196.44x203.50	O-RING 3.53x196.44x203.50	1
2.1.3	6.602400600-2	MANIGLIA DEVIATORE	DEVIATOR HANDLE	1
2.1.2	6.1009189-3-2	COPERCHIO DEVIATORE 5"	5" DEVIATOR COVER	1
2.1.1	6.1009194-6-2	CORPO DEVIATORE 5"	5" DEVIATOR BODY	1
2.1	6.1009187-5-2	GRUPPO DEVIATORE 5"	5" DEVIATOR ASSEMBLY	1
N°	Codice / Code	Descrizione	Description	Q.tà

2	6.881100520-1	KIT COLLETTORI STORM	KIT STORM COLLECTORS	1
1.17	6.927073550-1	POMPA ACQUA AUTODESCANTE	WATER PUMP	1
1.16	6.653401290-1	PULLEGIA POMPA ACQUA Dp=160	WATER PUMP PULLEY Dp=160	1
1.15	47310040016	GRANO UNI5923PIANOM6x1x8-12.9ZN-DEID	UNI5923 PIANO M6x1x8-12.9ZN-DEID	1
1.14	6.9230060050-1	CINGHIA TRAPEZOIDALE TIPO SPAX 1032	BELT SPAX 1032	1
1.13	6.925002004-2	GOMITO M.F. 1" ZN	CONNECTION 90° 1" ZN	1
1.12	6.925046005-2	RACCORDO PIGOMMA DIRITTO 1/2x25	1/2x25 CONNECTION	1
1.11	6.680600891-1	GUARNIZIONE SCARICO ACQUA	GASKET DISCHARGE WATER	1
1.10	6.541500001-1	CARTER PROTEZIONE CINGHIA	COVER	1
1.9	6.612056411-1	PIASTRINA SOSTEGNO PROTEZIONE	COVER SUPPORT	1
1.8	47300310194	VITE UNI 5931 T.C.E.I. M 8x1,25x 30 - 8.8 ZN	SCREW UNI 5931 T.C.E.I. M 8x1,25x30 - 8.8 ZN	4
1.7	47300250128	VITE UNI 5739 T.E. TF M10x1,5	UNI5739 T.E. TF M10x1,5x30-8.8 ZN	4
1.6	47350130015	RONDELLA GROWER UNI 1751 M10 - ZN	GROWER UNI 1751 M10 - C70 ZN	4
1.5	47350190042	RONDELLA PIANA UNI 6592 M10 - ZN	WASHER UNI 6592 M10	4
1.4	47300310190	VITE UNI5931 M6x1x8-8.8ZN-DEID	UNI5931T.C.E.I. M6x1x16-8.8ZN	4
1.3	47350190039	RONDELLA PIANA 6x12 UNI 6592	WASHER 6x12 UNI 6592	8
1.2	47350130011	RONDELLA GROWER UNI 1751 M 8 - ZN	GROWER UNI 1751 M 8 - C70 ZN	2
1.17	47350190045	RONDELLA PIANA UNI 6592 M12 - ZN	FLAT WASHER UNI 6592 M12 - ZN	2
1.16	47300250201	VITE UNI 5739 T.E. TF M12x1,75x90-8.8 ZN-D	SCREW UNI 5739 T.E. TF M12x90	2
1.15	47350190035	RONDELLA PIANA UNI 6592 6X12 5	WASHER UNI 6592 M 6 - ZN-D	2
1.14	47300310116	VITE UNI5931T.C.E.I. M6x1x16-8.8ZN	UNI5931T.C.E.I. M6x1x16-8.8ZN	2
1.13	6.841003150-1	PROTEZIONE PULLEGIA	PULLEY COVER	1
1.12	6.522000740-1	SLITTA DI REGOLAZIONE	ADJUSTMENT SUPPORT	1
1.11	6.512030270-1	PIASTRA POMPA ACQUA	WATER PUMP PLATE	1
1.1	6.411000220-1	PIASTRA REGOLAZIONE POMPA ACQUA	WATER PUMP ADJUSTMENT PLATE	1
1	6.883000150-1	KIT POMPA ACQUA STORM PM2000-2500	WATER PUMP KIT	1
N°	Codice / Code	Descrizione	Description	Q.tà



KIT		
6.889901750-1	KIT TENUTE STORM	STORM GASKETS KIT
CODE	ITA	ENG

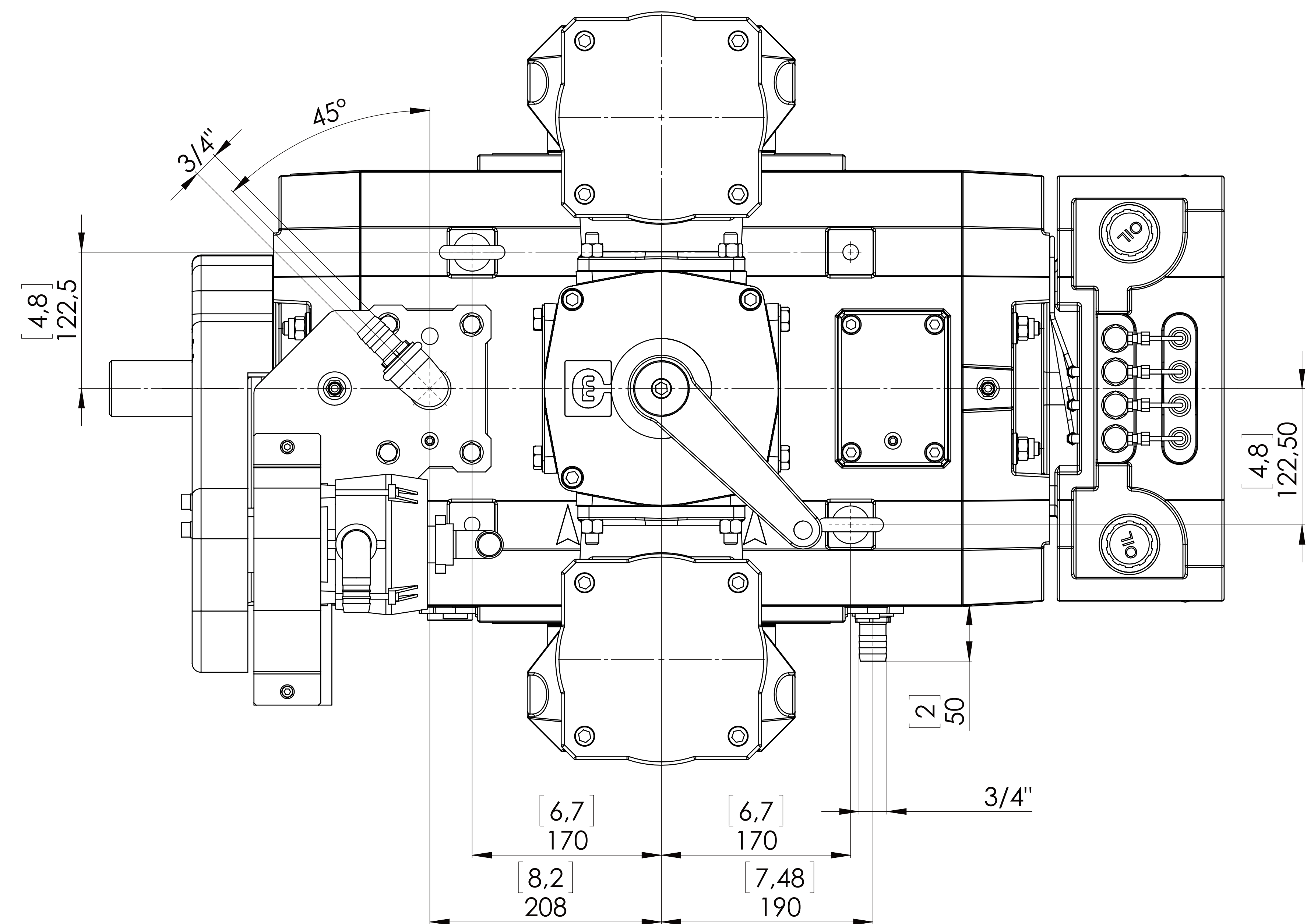
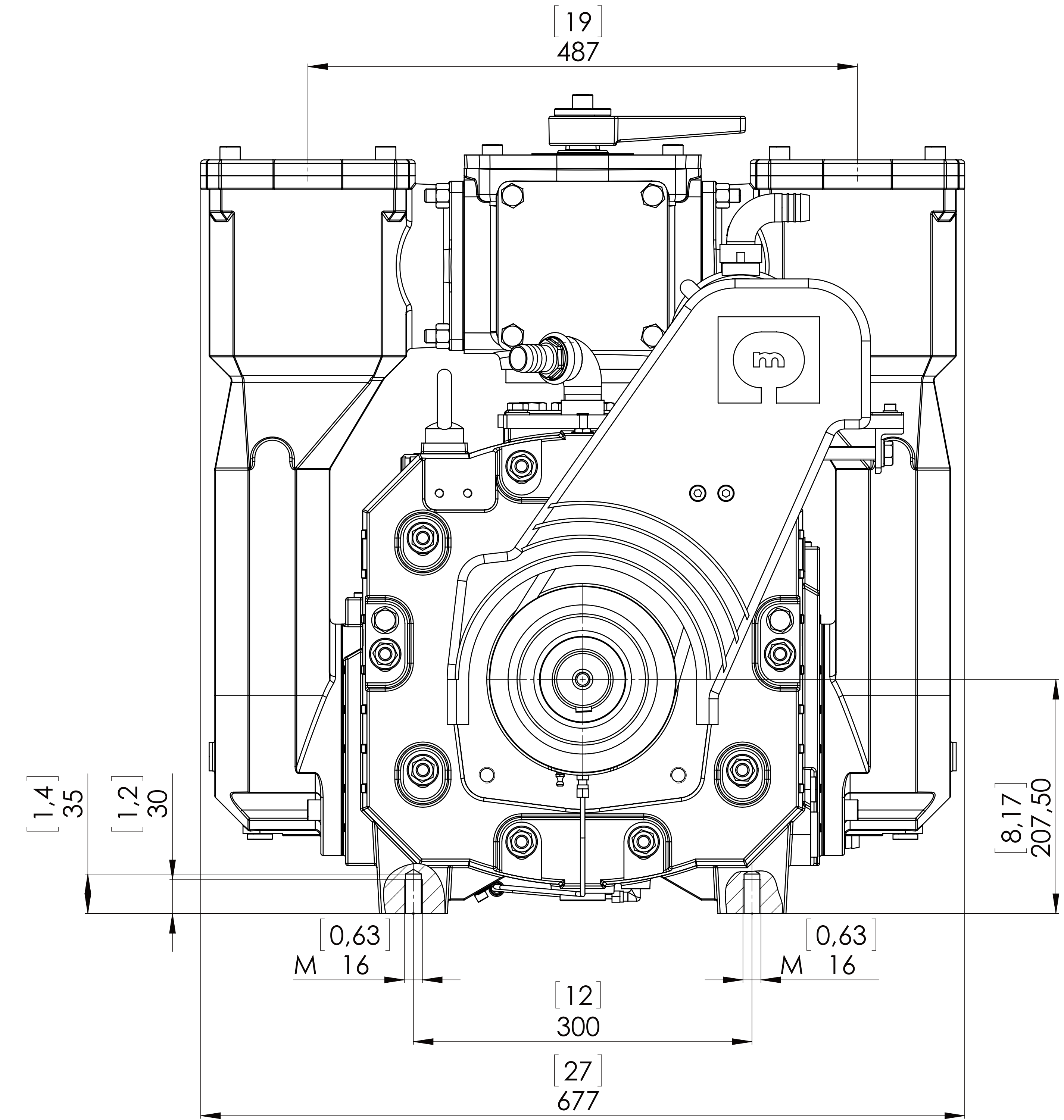
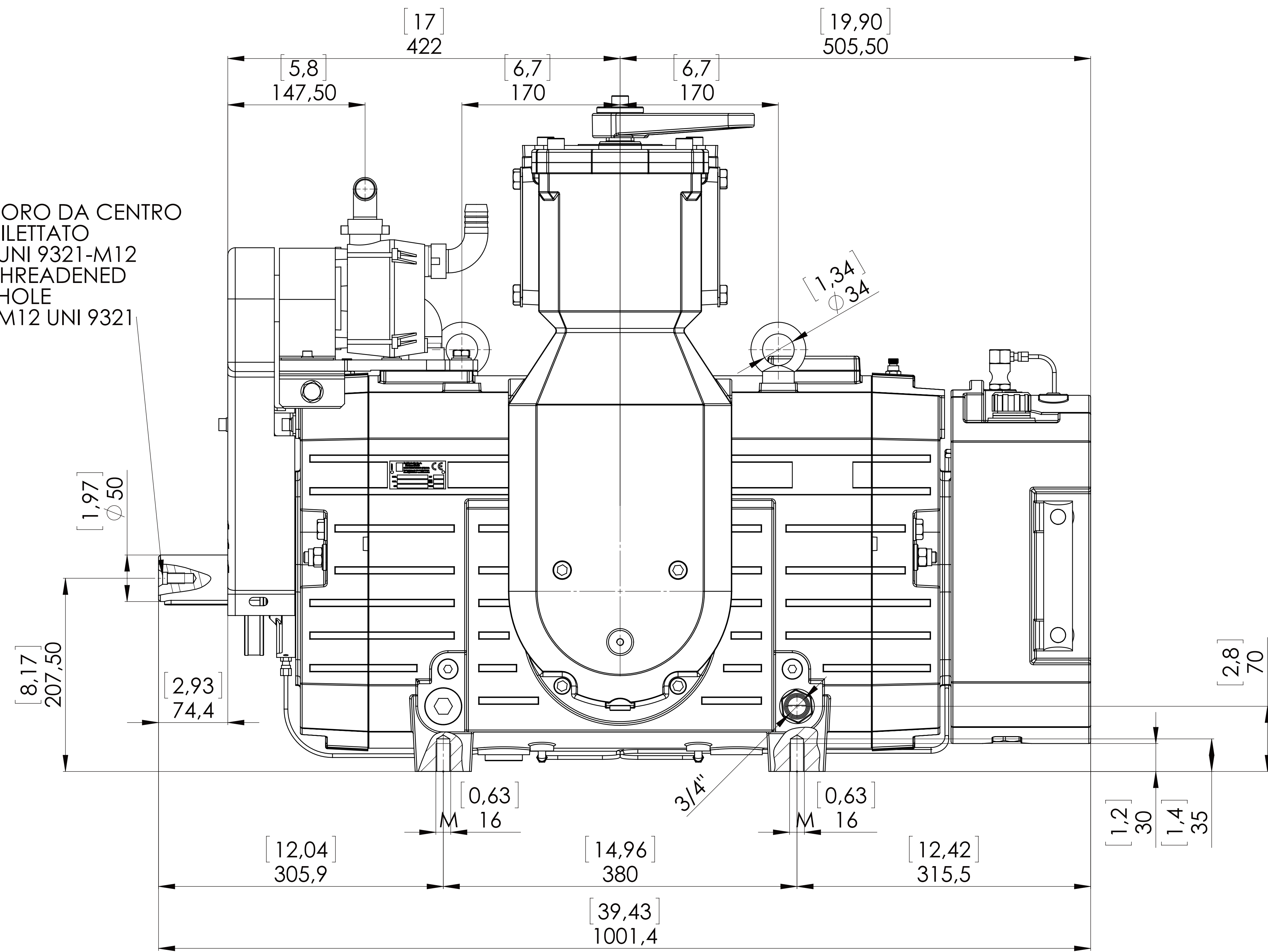
DESCRIZIONE (Description): **VEDI DISTINTA**  
 CODICE MATERIALE/Code Code: **6.211004630-1 / 00**  
**DEC.PM2000-SP-SX-P.ACQUA-COLLETTORE**  
 LINEARI (Linear) TP 09/06/2009  
 DACCORAMENTI (Accessories) TP 09/06/2009  
 COSTRUZIONI SALDATE (Welded constructions) MA 09/06/2009  
 470.608  
**6.211004630-1**  
 AO 1.3.5 1/3



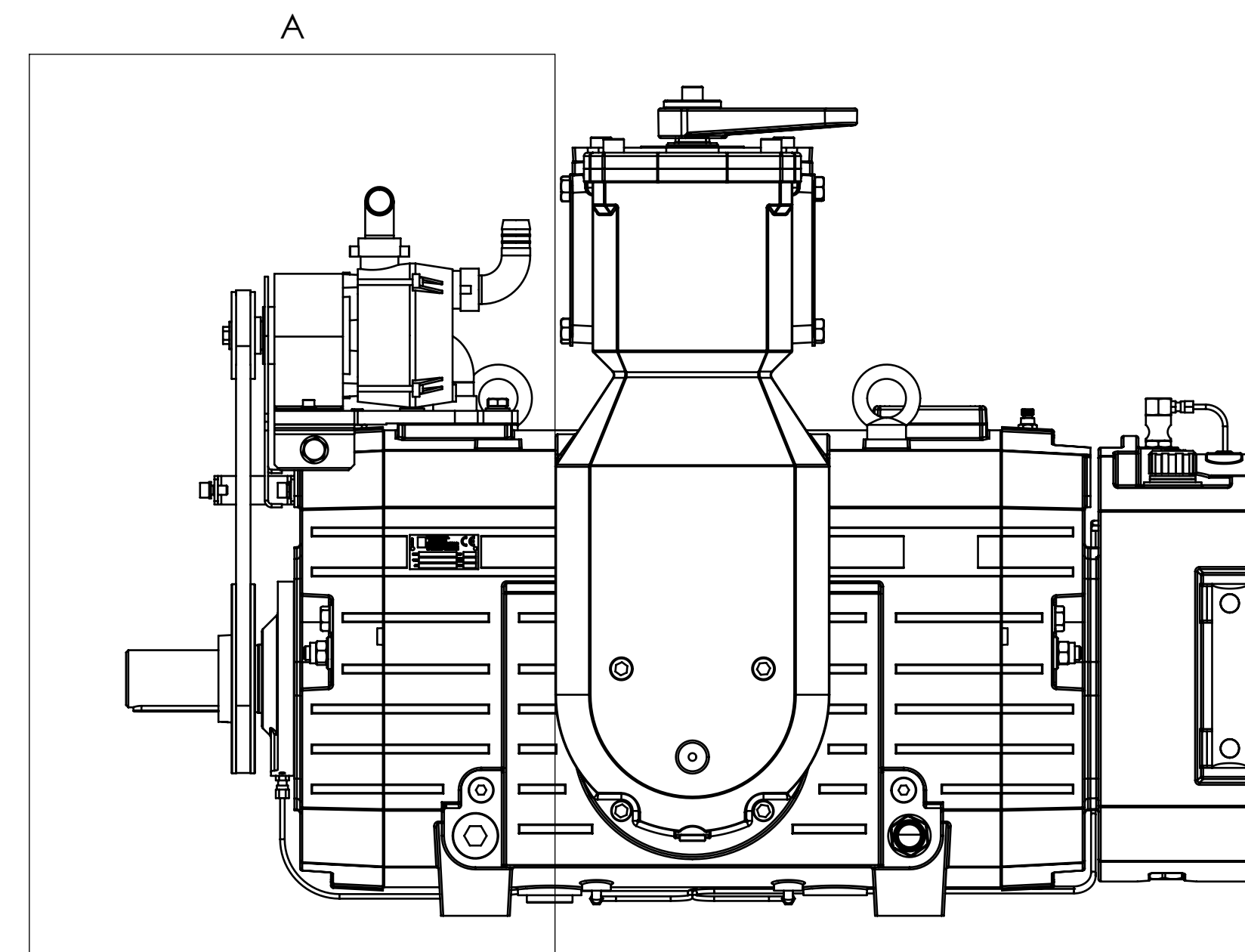
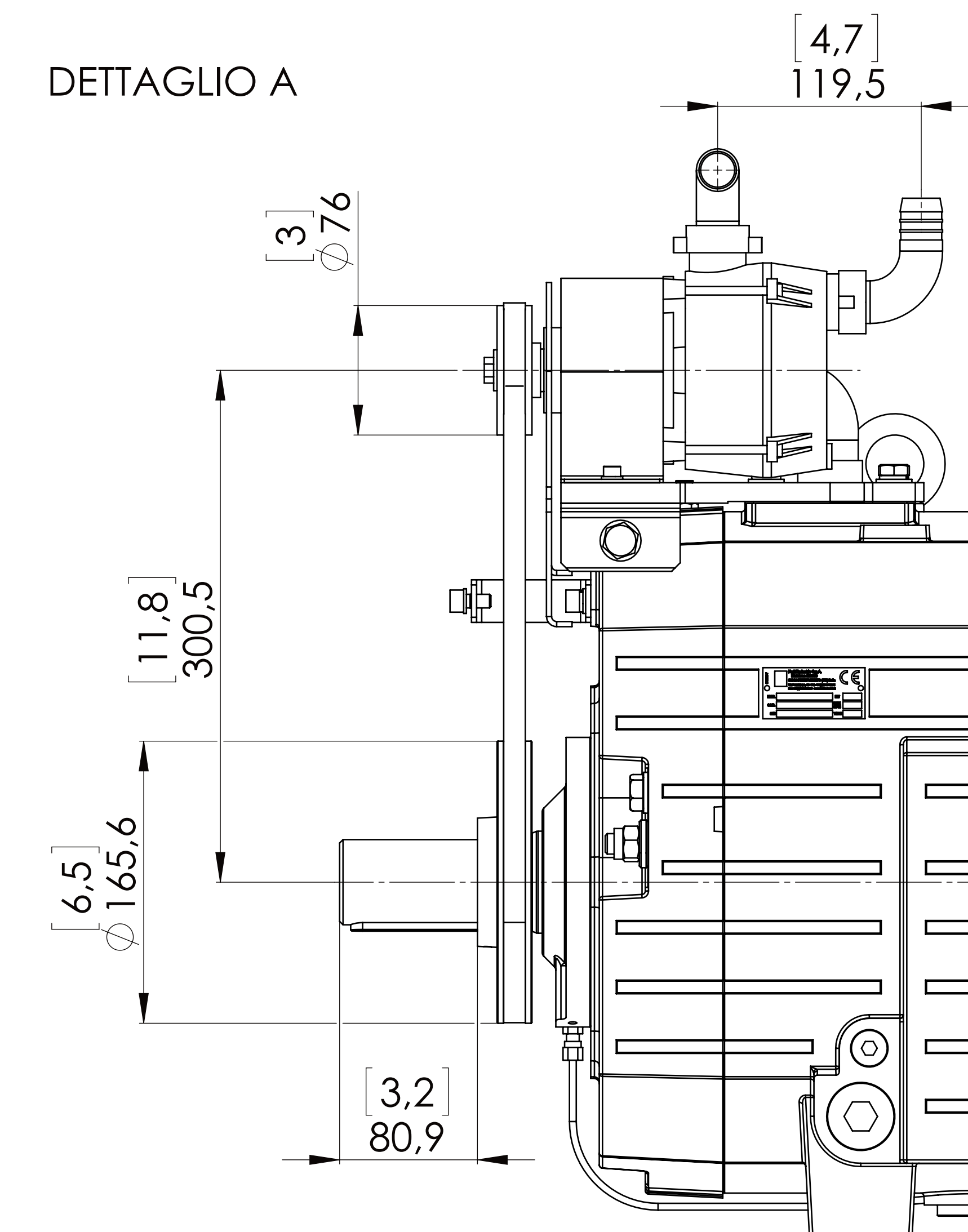




FORO DA CENTRO  
FILETTATO  
UNI 9321-M12  
THREADED  
HOLE  
M12 UNI 9321



DETTAGLIO A



PROIEZIONE SUPERIORE (Top view)		DIMENSIONI DIMENSIONI	
DESCRIZIONE (Description)	VEDI DISTINTA	CODICE MATERIALI/MATERIAL CODE	
DEC.PM2000-SP-SX-P.ACQUA-COLLETTORE			
		470.608 <b>6.211004630-1 / 00</b>	
<small>           LINEARI (Linear telephones)            DISPOSITIVI (Devices of phones)            COSTRUZIONI SALDATE (Welded constructions)         </small>		<small>           UNI - EN 22768-1-1            UNI - EN 22768-1-1            UNI - EN 13501-1         </small>	
<small>           6.211004630-1            AO 1,2,5 3/3         </small>		<small>           TP (data date: 09/06/2009)            TP (data date: 09/06/2009)            MA (data date: 09/06/2009)         </small>	