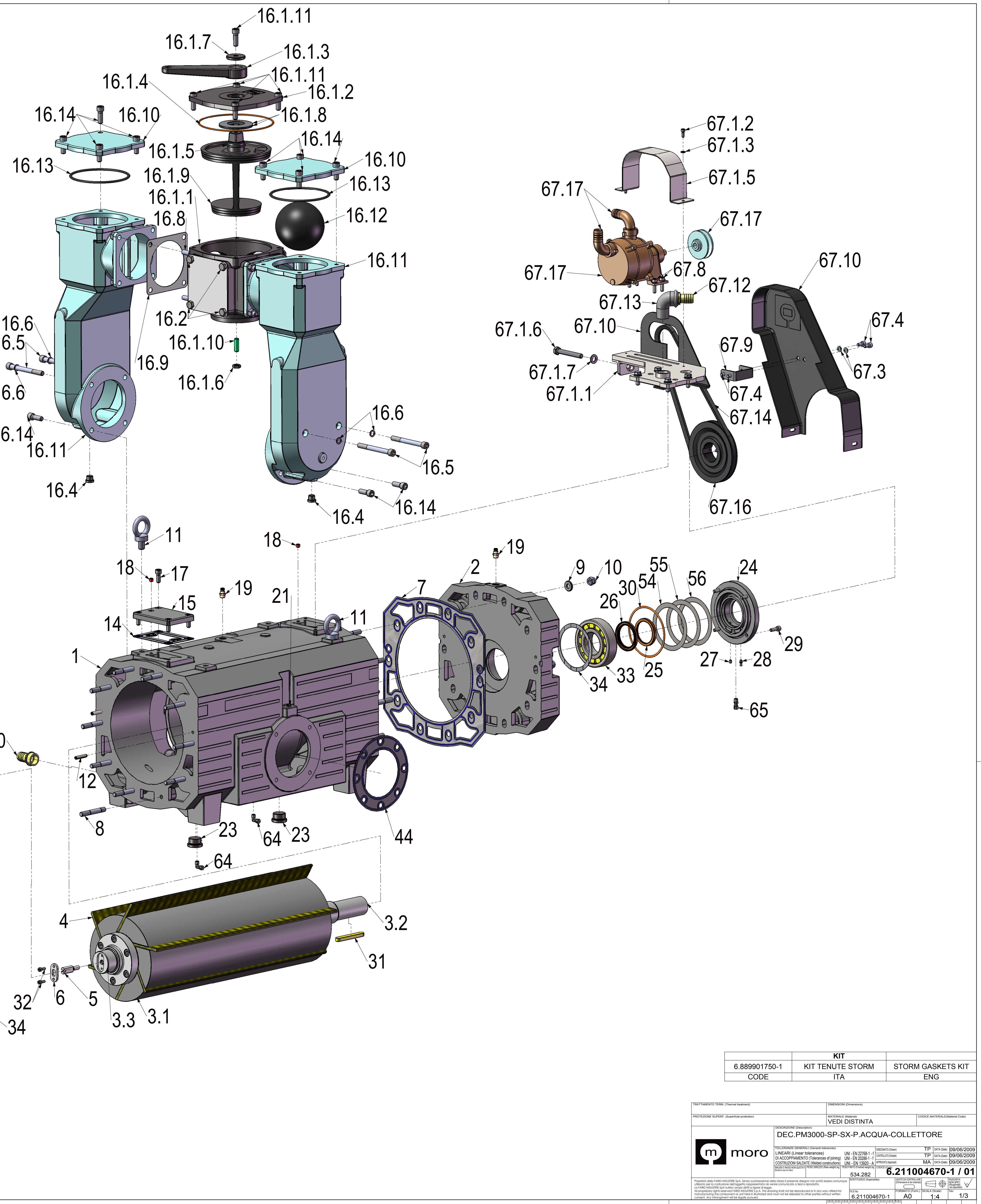


70	4434500004	TUBO OLIO MANDATA PM3000 STORM	OIL PIPE	1
69	4434500003	TUBO OLIO MANDATA PM3000 STORM	PM3000 OIL PIPE	1
68	4434500002	TUBO OLIO MANDATA PM3000 STORM	OIL PIPE PM3000	1
67.1	6.927073550-1	POMPA ACQUA AUTOEDESCANTE	WATER PUMP	1
67.1	6.653401290-1	PULEGGIA POMPA ACQUA Dp=160	WATER PUMP PULLEY Dp=160	1
67.1	4731004016	GRANO UNI5923PIANOM6x18-12.9ZN-DEID	UNI5923 PIANO M6x18-12.9ZN-DEID	1
67.1	6.923060050-1	CINGHIA TRAPEZOIDALE TIPO SPAX 1032	BELT SPAX 1032	1
67.1	6.92502004-2	GOMITO M-F 1" ZN	CONNECTION 90° 1"	1
67.1	6.925046005-2	RACCORDO PIGOMMA DIRITTO 1"x25	1"x25 CONNECTION	1
67.1	6.680600891-1	GUARNIZIONE SCARICO ACQUA	GASKET DISCHARGE WATER	47
67.1	6.541500001-1	CARTER PROTEZIONE CINGHIA	COVER	1
67.9	6.612035641-1	PIASTRINA SOSTEGNO PROTEZIONE	COVER SUPPORT	1
67.8	47300310194	VITE UNI 5931 T.C.E.I. M 8x1,25x30 - 8.8 ZN	SCREW UNI 5931 T.C.E.I. M 8x1,25x30 - 8.8 ZN	4
67.7	47300250128	VITE UNI 5739 T.E. TF M10x1,5	SCREW UNI 5739 T.E. TF M10x1,5	4
67.6	47350130015	RONDELLA GROWER UNI 1751 M10 - ZN	GROWER UNI 1751 M10 - C70 ZN	4
67.5	47350190042	RONDELLA PIANA UNI 6592 M10 - ZN	WASHER UNI 6592 M10	4
67.4	47300310180	VITE UNI5931 M8x16-8.8 ZN-DEID	UNI5931 T.C.E.I. M8x16-8.8ZN	4
67.3	47350190039	RONDELLA PIANA 6X12 UNI 6592	WASHER 6X12 UNI 6592	8
67.2	47350130011	RONDELLA GROWER UNI 1751 M 8 - ZN	GROWER UNI 1751 M 8 - C70 ZN	2
67.1	47350190045	RONDELLA PIANA UNI 6592 M12 - ZN	FLAT WASHER UNI 6592 M12 - ZN	1
67.1	47300250201	VITE UNI 5739 T.E. TF M12x1,75x90-8.8 ZN-D	SCREW UNI 5739 T.E. TF M12x90	1
67.1	6.641003190-1	PROTEZIONE PULEGGIA	PULLEY COVER	1
67.1	6.522000740-1	SLITTA DI REGOLAZIONE	ADJUSTMENT SUPPORT	1
67.1	47350190035	RONDELLA PIANA UNI 6592 6X12,5	WASHER UNI 6592 M 6 - 2N-DN	2
67.1	47300310116	VITE UNI5931T.C.E.I. M6x16-8.8ZN	UNI5931T.C.E.I. M6x16-8.8ZN	2
67.1	6.512030270-1	WATER POMPA ACQUA	WATER PUMP ADJUSTMENT PLATE	1
67.1	6.411000220-1	PIASTRA REGOLAZIONE POMPA ACQUA	WATER PUMP KIT	1
67	6.883000150-1	KIT POMPA ACQUA STORM PM2000-2500	WATER PUMP KIT	1
66	6.922000000-1	FASCETTA RIVESTITA IN GOMMA D=7,9	D=7.9 CLAMP	1
65	6.924063050-2	RACCORDO DIRITTO 04-1/8"	04-1/8" STRAIGHT CONNECTION	7
64	6.924061050-2	RACCORDO 90° 04-1/8"	90° 04-1/8" CONNECTION	5
63	6.644500000-2	FILTRO OLIO	OIL FILTER	1
62	6.676100670-1	TUBO OLIO	OIL PIPE	1
61	6.676100660-1	TUBO OLIO	OIL PIPE	1
60	6.676100660-1	TUBO OLIO	OIL PIPE	1
59	6.676100660-1	TUBO OLIO	OIL PIPE	1
58	6.676100660-1	TUBO OLIO	OIL PIPE	1
57	6.676100770-1	TUBO OLIO ASPIRAZIONE	OIL PIPE	1
56	47350010036	RONDELLA DI SPESSE 105x130 sp=0,20-SI2K60	SPACER 105x130 sp=0,20 - SI2K60	2
55	47350010035	RONDELLA DI SPESSE 105x130 sp=0,15-SI2K60	SPACER 105x130 sp=0,15 - SI2K60	2
54	47350010034	RONDELLA DI SPESSE 105x130 sp=0,10-SI2K60	SPACER 105x130 sp=0,10 - SI2K60	2
53	47350190045	RONDELLA PIANA UNI 6592 M12 - ZN	FLAT WASHER UNI 6592 M12-ZN	4
52	47300250161	VITE UNI 5739 T.E. TF M12x1,75x16-8.8 ZN-D	SCREW UNI 5739 T.E. TF M12x1,75x16-8.8 ZN-D	4
51.4	6.1012280-9-2	RACCORDO ORIENTABILE 1/8" - Ø6	1/8" - Ø6 ADJUSTABLE FITTING	1
51.3	6.924063050-2	RACCORDO DIRITTO 04-1/8"	04-1/8" STRAIGHT CONNECTION	2
51.2	6.924061050-2	RACCORDO 90° 04-1/8"	90° 04-1/8" CONNECTION	2
51.1	6.624003030-1	POMPA OLIO STORM SX 4 MANDATE	OIL PUMP C/W 4 PORT (CALIBRATED)	1
51	6.822700400-1	KIT POMPA OLIO SX STORM	C/W OIL PUMP KIT	1
50	6.1046708-7-2	TARGHETTA DECOMPRESSORI	VACUUM PUMP LABEL	1
49	47350160033	RONDELLA RAME 1/4"	1/4" COPPER WASHER	4
48	6.453300140-1	OLIATORE 1 USCITA	OILER	4
47	6.684500030-2	TAPPO X TUBO	PLUG	4
46	47350190039	RONDELLA PIANA 14x22 sp=1,5 - RAME	COPPER WASHER 14x22 sp=1.5	4
45	47300310389	VITE UNI 5931 T.C.E.I. M14x2x 60 - 8.8 ZN	SCREW UNI 5931 T.C.E.I. M14x2x 60 - 8.8 ZN	4
44	6.680600970-1	GUARNIZIONE	GASKET	2
43	6.680600720-1	GUARNIZIONE COPERCHIO SERBATOIO OLIO	OIL RESERVOIR GASKET	1
42	6.965038101-2	SPIA LIVELLO A COLONNA	OIL LEVEL	2
41	6.92706055-2	TAPPO CARICO OLIO 1"	1" OIL PLUG	2
40	6.683301650-1	COPERCHIO SERBATOIO OLIO	OIL TANK COVER	1
39	6.1009213-3-2	ANELLO OR 3.53x196.44x203.50	O-RING 3.53x196.44x203.50	1
38	6.965023003-2	TAPPO CARICO OLIO 3/4"	3/4" OIL-IN PLUG	1
37	6.661300080-1	SERBATOIO OLIO STORM	OIL TANK STORM	1
36	6.921003517-2	ANELLO OR-3131	O-RING 3131	1
35	6.663400780-1	FLANGIA SUPPORTO POMPA OLIO	PUMP OIL COVER	1
34	6.963005003-2	ANELLO COMPENSAZIONE	COMPENSATION RING	2
33	6.931000113-1	DISCINETTO RULLI CILINDR. NU-312-ECJ-C3 60x130x31	BEARING NU-312-ECJ-C3	2
32	47300310116	VITE UNI5931T.C.E.I. M6x16-8.8ZN	UNI5931T.C.E.I. M6x16-8.8ZN	5
31	47410010067	LINGUETTA UNI 6604A 14x 9x100	KEY UNI 6604A 14x 9x100	1
30	6.921003564-1	ANELLO OR4512 3.53x129.77 (VITON)	O-RING OR4512 3.53x129.77	2
29	47300310190	VITE UNI 5931 T.C.E.I. M8x1,25x25-8.8 ZN-D	SCREW UNI 5931 T.C.E.I. M 8x1,25x25 - 8.8 ZN	16
28	47630010005	INGRESSO A SFERA M6x1	GREASER 6x1	1
27	47310040016	GRANO UNI5923PIANOM6x18-12.9ZN-DEID	UNI5923 PIANO M6x18-12.9ZN-DEID	1
26	6.921027069-1	ANELLO TENUTA 60x75x8 VITON	SHAFT SEAL 60x75x8	1
N°	Codice / Code	Descrizione	Description	Q.tà

25	6.921027069-1	ANELLO TENUTA 60x75x8 VITON	SHAFT SEAL 60x75x8	1
24	6.663400760-1	FLANGIA PORTATENUTE STORM	FRONT SEAL COVER STORM	1
23	6.925070054-1	TAPPO 1" + RONDELLA	1" PLUG	3
22	6.925070051-1	TAPPO 3/8" + RONDELLA	3/8" PLUG	2
21	6.925070050-1	TAPPO 1/4" + RONDELLA	PLUG 1/4" + WASHER	2
20	6.925046005-2	RACCORDO PIGOMMA DIRITTO 1"x25	1"x25 CONNECTION	1
19	6.925034005-1	RUBINETTO DI SFATIO 1/4" GAS	RELIEF VALVE 1/4"	3
18	6.925070000-2	TAPPO 1/8" GAS CONICO	1/8" NUT	2
17	47300310248	VITE UNI 5931 T.C.E.I. M10x1,5x25 - 8.8 ZN	SCREW UNI 5931 T.C.E.I. M10x1,5x25 - 8.8 ZN	4
16.1	47300310316	VITE UNI5931 T.C.E.I. M12x1,75x35-8.8ZN-DEID	SCREW T.C.E.I. M12x35	12
16.1	6.921003212-2	ANELLO OR6600 NBR	O-RING 6600	2
16.1	6.693500100-1	SFERA Ø130	RUBBER BALL Ø130	1
16.1	6.626300290-1	COLLETTORE ARIA STORM	AIR MANIFOLD STORM	2
16.1	6.663301670-1	COPERCHIO COLLETTORE ARIA	MANIFOLD COVER	2
16.9	6.1009183-9-2	GUARNIZIONE	GASKET	2
16.8	47310190010	PRIGIONIERO UNI 5911 RADICE MEDIA	STUD UNI 5911 M12x1,75x35	4
16.7	47320160022	DADO UNI 5587 ALTO M12x1,75 - 8 (6S) ZN-DEID	NUT UNI 5587 ALTO M12x1,75 - 8 (6S) ZN-DEID	8
16.6	47350160028	RONDELLA PIANA 12x18sp=1,5 - RAME	CHOPPER WASHER 12x18sp=1.5	4
16.5	47300310358	VITE UNI5931 T.C.E.I. M12x1,75x120-8.8ZN	SCREW UNI5931 T.C.E.I. M12x1,75x120-8.8ZN	4
16.4	6.925070051-1	TAPPO 3/8" + RONDELLA	3/8" PLUG	2
16.3	6.1009167-9-2	COPERCHIO CARTONE	CARDBOARD COVER	2
16.2	47300250161	VITE UNI 5739 T.E. TF M12x1,75x16-8.8 ZN-D	SCREW UNI 5739 T.E. TF M12x1,75x16-8.8 ZN-D	8
16.1	47300310316	VITE UNI5931 T.C.E.I. M12x1,75x35-8.8ZN-DEID	SCREW T.C.E.I. M12x35	5
16.1	47310040071	GRANO UNI 5923 PIANO M12x1,25x35-12.9 NERO	SET SCREW M12x1,25x35-12.9 NERO	1
16.1	6.526400000-1	DEVIATORE 5" CON SFERA	5" DEVIATOR WITH SPHERE	1
16.1	6.964061016-2	MOLLA A TAZZA Ø=90X46X2,5	Ø=90X46X2.5 SPRING	2
16.1	6.683000620-2	RONDELLA	WASHER	1
16.1	6.1013393-7-2	DADO ES. M12x1,25 PF ZN	M12x1,25 PF ZN NUT	1
16.1	6.921003116-2	ANELLO OR 51.51x44.45x3.53	O-RING 51.51x44.45x3.53	1
16.1	6.1009213-3-2	ANELLO OR 3.53x196.44x203.50	O-RING 3.53x196.44x203.50	1
16.1	6.602400060-2	MANIGLIA DEVIA TORE	DEVIATOR HANDLE	1
16.1	6.1009189-3-2	COPERCHIO DEVIA TORE 5"	5" DEVIATOR COVER	1
16.1	6.1009194-6-2	CORPO DEVIA TORE 5"	5" DEVIATOR BODY	1
16.1	6.1009187-5-2	GRUPPO DEVIA TORE 5"	5" DEVIATOR ASSEMBLY	1
16	6.861100520-1	KIT COLLETTORI STORM	KIT STORM COLLECTORS	1
15	6.663400800-1	COPERCHIO SCARICO	DISCHARGE COVER	1
14	6.680600891-1	GUARNIZIONE SCARICO ACQUA	GASKET DISCHARGE WATER	47
13	47370190004	SPINA DIN 7284 CONICO CON FORO ESTRAZ Ø=8x40 - 198C/M65	STUD DIN 7284 CONICA CON FORO ESTRAZ Ø=8x40 - 198C/M65	2
12	47370040017	SPINA DIN 7879 CIL. CON FORO FILETT Øx40 - 105C/M65	STUD DIN 7879 CIL. CON FORO FILETT Øx40 - 105C/M65	2
11	47530070008	COLFARO UNI2947 16 MASCHIO ZN	RINGBOLT UNI2947 16 MASCHIO ZN	2
10	47320130008	DADO UNI 5542 AUTOFR M12x1,75 - CL 6H ZN	NUT UNI5542 AUTOFR M12x1,75-CL6H	20
9	6.683001650-1	RONDELLA BISELATA 13x28x5	13x28x5 WASHER	20
8	47310190014	PRIGIONIERO UNI 5911 R.M. M12x1,75x70 - 8.8 NERO	STUD SCREW UNI5911 R.M. M12x1,75x70 - 8.8 NERO	20
7	6.680600881-1	GUARNIZIONE FLANGIA	FLANGE GASKET	2
6	6.612041210-1	FERMO PERNO POMPA OLIO	OIL PUMP PIN	1
5	6.621018400-1	PERNO POMPA OLIO	OIL PUMP PIN	1
4	6.657501250-1	LAMELLA PM3000	PM3000 VANE	6
3.4	47300310316	VITE UNI5931 T.C.E.I. M12x1,75x35-8.8ZN-DEID	SCREW T.C.E.I. M12x35	12
3.3	6.611007790-1	MOZZO POSTERIORE STORM	REAR HUB STORM	1
3.2	6.611007770-1	MOZZO ANTERIORE STORM	DRIVE SHAFT STORM	1
3.1	6.653401270-1	ROTORE PM3000 STORM	ROTOR PM3000 STORM	1
3	6.470300380-1	ASSIEME ROTORE SX PM3000 STORM	PM3000 STORM C/W ROTOR ASSEMBLY	1
2	6.610402010-1	FLANGIA ANT/POST	FRONT/REAR COVER	2
1	6.662401020-1	CORPO PM3000 STORM	BODY PM3000 STORM	3
N°	Codice / Code	Descrizione	Description	Q.tà

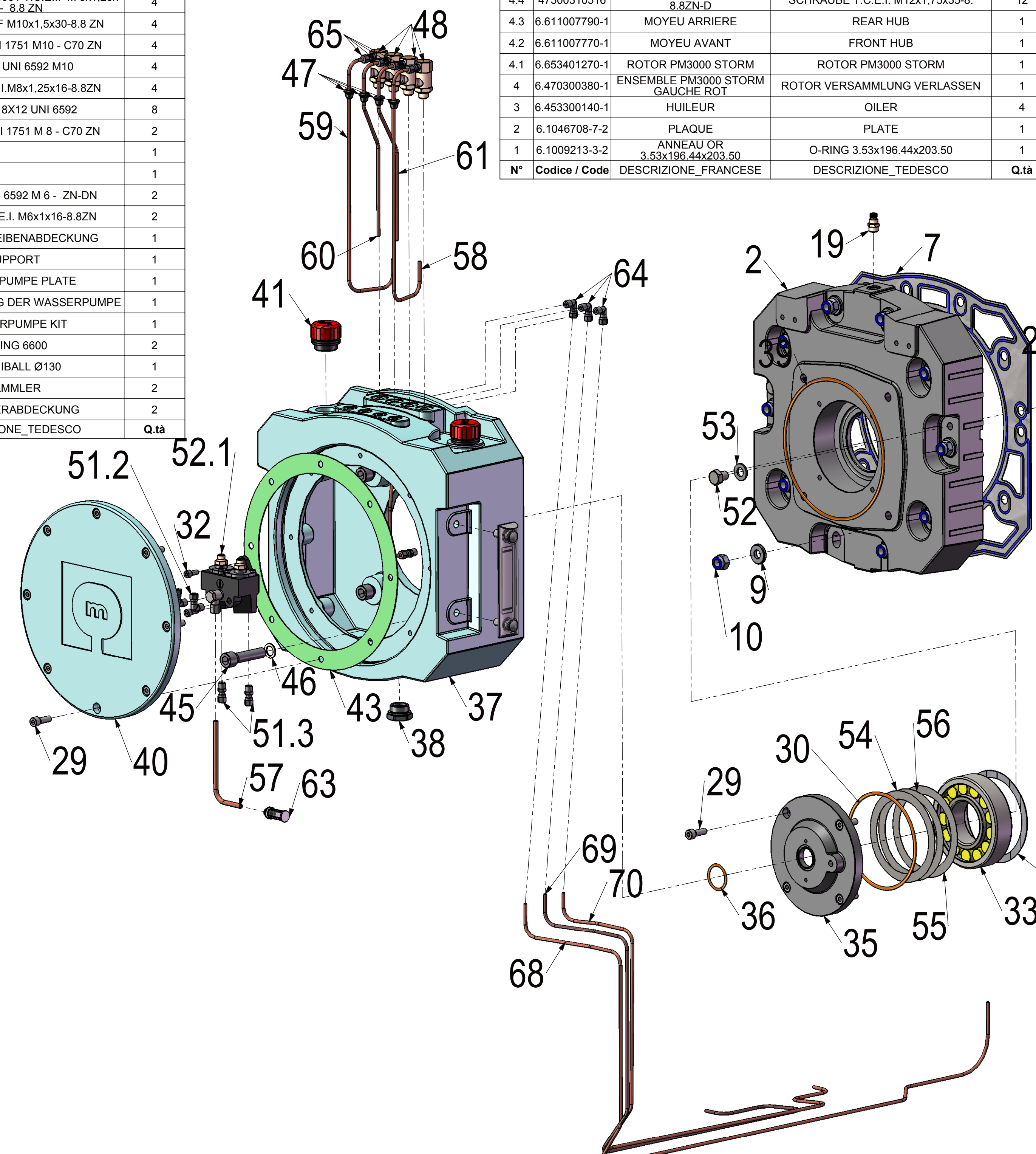


KIT		
6.889901750-1	KIT TENUTE STORM	STORM GASKETS KIT
CODE	ITA	ENG

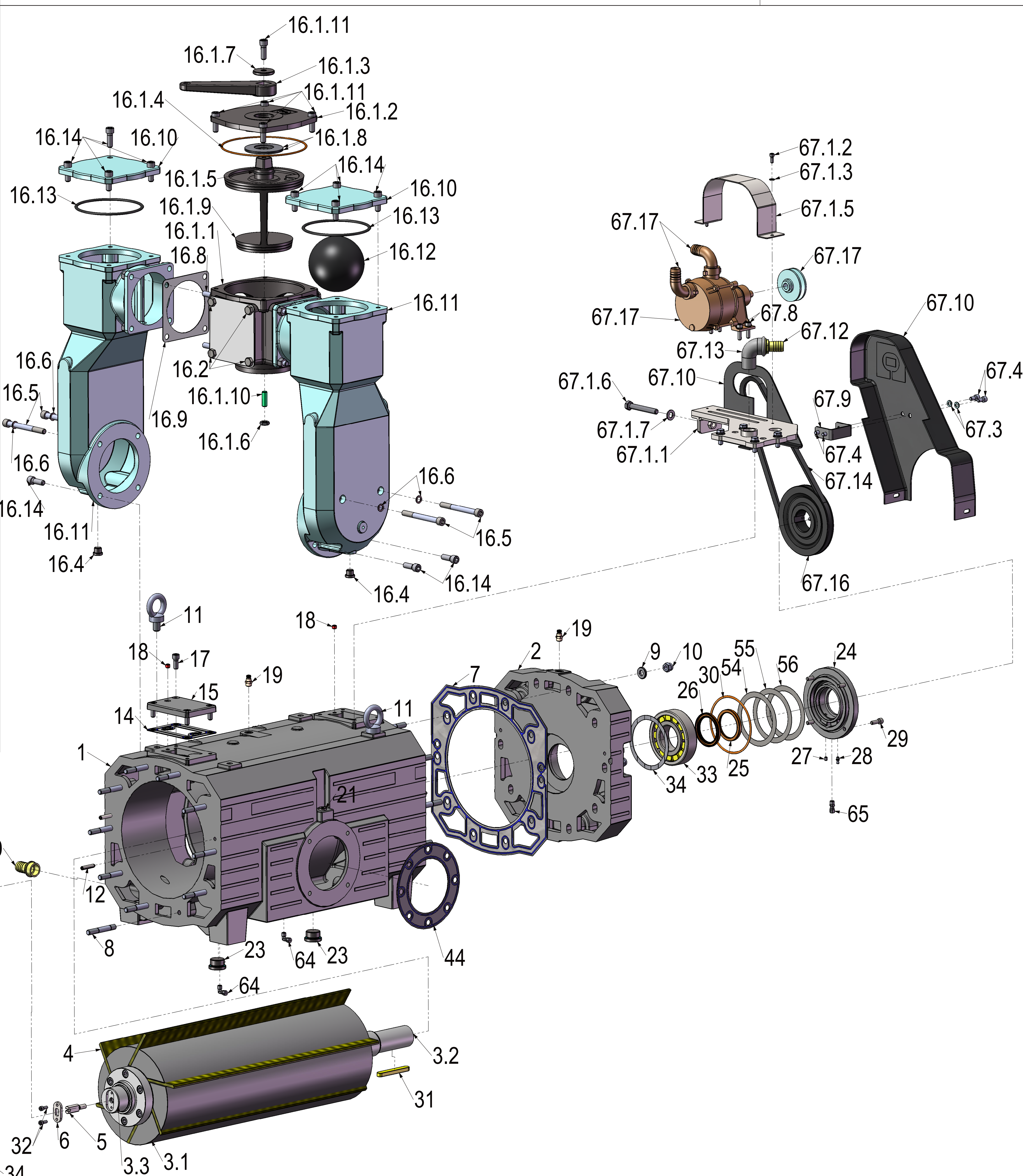
DESCRIZIONE (Description): **VEDI DISTINTA**  
 CODICE MATERIALI/MATERIAL CODE: **6.211004670-1 / 01**  
 LINEARI (Linear): **TP** (Data: 09/06/2009)  
 DISCINETTI (Discs): **TP** (Data: 09/06/2009)  
 COSTRUZIONI SALDATE (Welded constructions): **MA** (Data: 09/06/2009)

534 282  
**6.211004670-1 / 01**  
 AO 1/4 1/3

70	47630010005	GRAISSEUR 6x1	GREASER 6x1	1
69	47630070008	PITON UNI2947 16 MASCHIO ZN	RINGSCHRAUBEN UNI2947 16 MASCHIO ZN	2
68	47410010067	CLAVETTE UNI 6604A 14x 8x100	FEDERKEIL UNI 6604A 14x 8x100	1
67	47370190004	PIN UNI 7284 CONICA CON FORO ESTRAZ d=8x40 - 18NCGMG	GESTUT UNI 7284 CONICA CON FORO ESTRAZ d=8x40 - 18NCGMG	2
66	47370040017	PIN DIN 7979 CIL CON FORO FILETT 8x40 - 100C6	GESTUT DIN 7979 CIL CON FORO FILETT 8x40 - 100C6	2
65	47350190045	RONDELLE UNI 6592 M12-ZN	SCHIEBE UNI 6592 M12-ZN	4
64	47350160039	RONDELLE CUIVRE 14x22 sp=1,5	KUPFER SCHEIBE 14x22 sp=1,5	4
63	47350160033	1/4" RONDELLE DE CUIVRE	1/4" KUPFER SCHEIBE	4
62	47350010036	EPAISSEUR 105x130 sp=0,20-SI2K60	SPACER 105x130 sp=0,20-SI2K60	2
61	47350010035	EPAISSEUR 105x130 sp=0,15-SI2K60	SPACER 105x130 sp=0,15-SI2K60	2
60	47350010034	EPAISSEUR 105x130 sp=0,10-SI2K60	SPACER 105x130 sp=0,10-SI2K60	2
59	47320130008	ECROU UNI5542 AUTOFR M12x1,75-C	MUTTER UNI5542 AUTOFR M12x1,75-C	20
58	47310190014	VIS GOIJON UNI5911 R.M. M12x1,75-C	STIFTSCHRAUBE UNI5911 R.M. M12x1,75-C	20
57	47310040016	UNI5923 PIANO M6x1x8-12.9ZN-DEID	UNI5923 PIANO M6x1x8-12.9ZN-DEID	1
56	47300310389	VIS UNI 5931 T.C.E.I. M14x2x80 - 8.8 ZN	SCHRAUBE UNI 5931 T.C.E.I. M14x2x80 - 8.8 ZN	4
55	47300310248	VIS UNI 5931 T.C.E.I. M10x1,5x25 - 8.8 ZN	SCHRAUBE UNI 5931 T.C.E.I. M10x1,5x25 - 8.8 ZN	4
54	47300310190	VIS UNI 5931 T.C.E.I. M 8x1,25x25 - 8.8 ZN	SCHRAUBE UNI 5931 T.C.E.I. M 8x1,25x25 - 8.8 ZN	16
53	47300310116	UNI5931T.C.E.I. M6x1x16-8.8ZN	UNI5931T.C.E.I. M6x1x16-8.8ZN	5
52	47300250161	VIS UNI 5739 T.E. TF M12x1,75x16 - 8.8 ZN	SCHRAUBE UNI 5739 T.E. TF M12x1,75x16 - 8.8 ZN	4
51	44345000004	TUYEAU DE L'HUILE	OELROHR	1
50	44345000003	TUYEAU DE L'HUILE	OELROHR	1
49	44345000002	TUYEAU DE L'HUILE	OELROHR	1
48	6.965038101-2	INDICATEUR DE NIVEAU D'HUILE	ÖLMESSVORRICHTUNG	2
47	6.965023003-2	3/4" BOUCHON	3/4" STÖPSEL	1
46	6.963005003-2	BAGUE DE COMPENSATION	RING OF ERSATZ	2
45	6.931000113-1	ROULEMENT NJ-312-ECJ-C3	ROLLENLAGER NJ-312-ECJ-C3	2
44	6.927096055-2	BOUCHON DE L'HUILE 1"	OIL CAP 1"	2
43	6.925070054-1	BOUCHON 1"	CAP 1"	3
42	6.925070051-1	BOUCHON 3/8"	STÖPSEL 3/8"	2
41	6.925070050-1	BOUCHON 1/4"	DECKEL 1/4"	2
40	6.925070000-2	BOUCHON 1/8"	DECKEL 1/8"	2
39	6.925046005-2	RACCORD 1"x25	ANSCHLUS 1"x25	1
38	6.925040005-1	RELIEF VALVE 1/4"	ÜBERDRUCKVENTIL 1/4"	3
37	6.924063050-2	RACCORD Ø4-1/8"	ANSCHLUS Ø4-1/8"	7
36	6.924061050-2	RACCORD 90° Ø4-1/8"	ANSCHLUS 90° Ø4-1/8"	5
35	6.922000000-1	AGRAFE	ZWINGE	1
34	6.921027069-1	BAGUE DE RETENUE Ø6x9x7	SIMMERRING Ø6x9x7	1
33	6.921027068-1	BAGUE DE RETENUE Ø6x7x8	SIMMERRING Ø6x7x8	1
32	6.921003564-1	O-RING OR4512 3.53x129.77	O-RING OR4512 3.53x129.77	2
31	6.921003517-2	ANNEAU OR-3131	O-RING-3131	1
30.17	6.920703550-1	WASSERPUMPE	WASSERPUMPE	1
30.16	6.653401290-1	POULIE POMPE A EAU	RIEMENSCHIEBE WASSERPUMPE	1
30.15	47310040016	UNI5923 PIANO M6x1x8-12.9ZN-DEID	UNI5923 PIANO M6x1x8-12.9ZN-DEID	1
30.14	6.923060050-1	CEINTURE SPAX 1032	BELT SPAX 1032	1
30.13	6.925002004-2	RACCORDEMENT 90° 1"	CONNECTION 90° M 1"	1
30.12	6.925046005-2	RACCORD 1"x25	ANSCHLUS 1"x25	1
30.11	6.680600891-1	JOINT	DICHTUNG	47
30.10	6.541500001-1	COUVERTURE	COVER	1
30.9	6.612035641-1	SOUTIEN DE COUVERTURE	COVER SUPPORT	1
30.8	47300310194	VIS UNI 5931 T.C.E.I. M 8x1,25x30 - 8.8 ZN	SCHRAUBE UNI 5931 T.C.E.I. M 8x1,25x30 - 8.8 ZN	4
30.7	47300250128	UNI5739T.E. TF M10x1,5x30-8.8ZN	UNI5739T.E. TF M10x1,5x30-8.8ZN	4
30.6	47350130015	GROWER UNI 1751 M10 - C70 ZN	GROWER UNI 1751 M10 - C70 ZN	4
30.5	47350190042	RONDELLE UNI 6592 M10	SCHIEBE UNI 6592 M10	4
30.4	47300310180	UNI5931T.C.E.I. M8x1,25x16-8.8ZN	UNI5931T.C.E.I. M8x1,25x16-8.8ZN	4
30.3	47350190039	RONDELLE 8x12 UNI 6592	SCHIEBE 8x12 UNI 6592	8
30.2	47350130011	GROWER UNI 1751 M 8 - C70 ZN	GROWER UNI 1751 M 8 - C70 ZN	2
30.1.7	47350190045			1
30.1.6	47300250201			1
30.1.5	47350190035	RONDELLE UNI 6592 M 6 - ZN-DN	SCHIEBE UNI 6592 M 6 - ZN-DN	2
30.1.4	47300310116	UNI5931T.C.E.I. M6x1x16-8.8ZN	UNI5931T.C.E.I. M6x1x16-8.8ZN	2
30.1.3	6.641003190-1	POULIE COVER	RIEMENSCHIEBENABDECKUNG	1
30.1.2	6.522000740-1	SOUTIEN	SUPPORT	1
30.1.1	6.512030270-1	PLATE POMPE A EAU	WASSERPUMPE PLATE	1
30.1	6.411000220-1	ENSEMBLE APPUYI DE LA POMPE A EAU	UNTERSTÜTZUNG DER WASSERPUMPE	1
30	6.883000150-1	POMPE A EAU KIT	WASSERPUMPE KIT	1
29.14	6.921003212-2	O-RING 6600	O-RING 6600	2
29.13	6.693500100-1	BALLE EN CAOUTCHOUC Ø130	GUMMIBALL Ø130	1
29.12	6.626300290-1	COLLECTEUR	SAMMLER	2
29.11	6.663301670-1	COUVERCLE DU COLLECTEUR	VERTEILERABDECKUNG	2
N°	Codice / Code	DESCRIZIONE_FRANCESE	DESCRIZIONE_TEDESCO	Q.tà

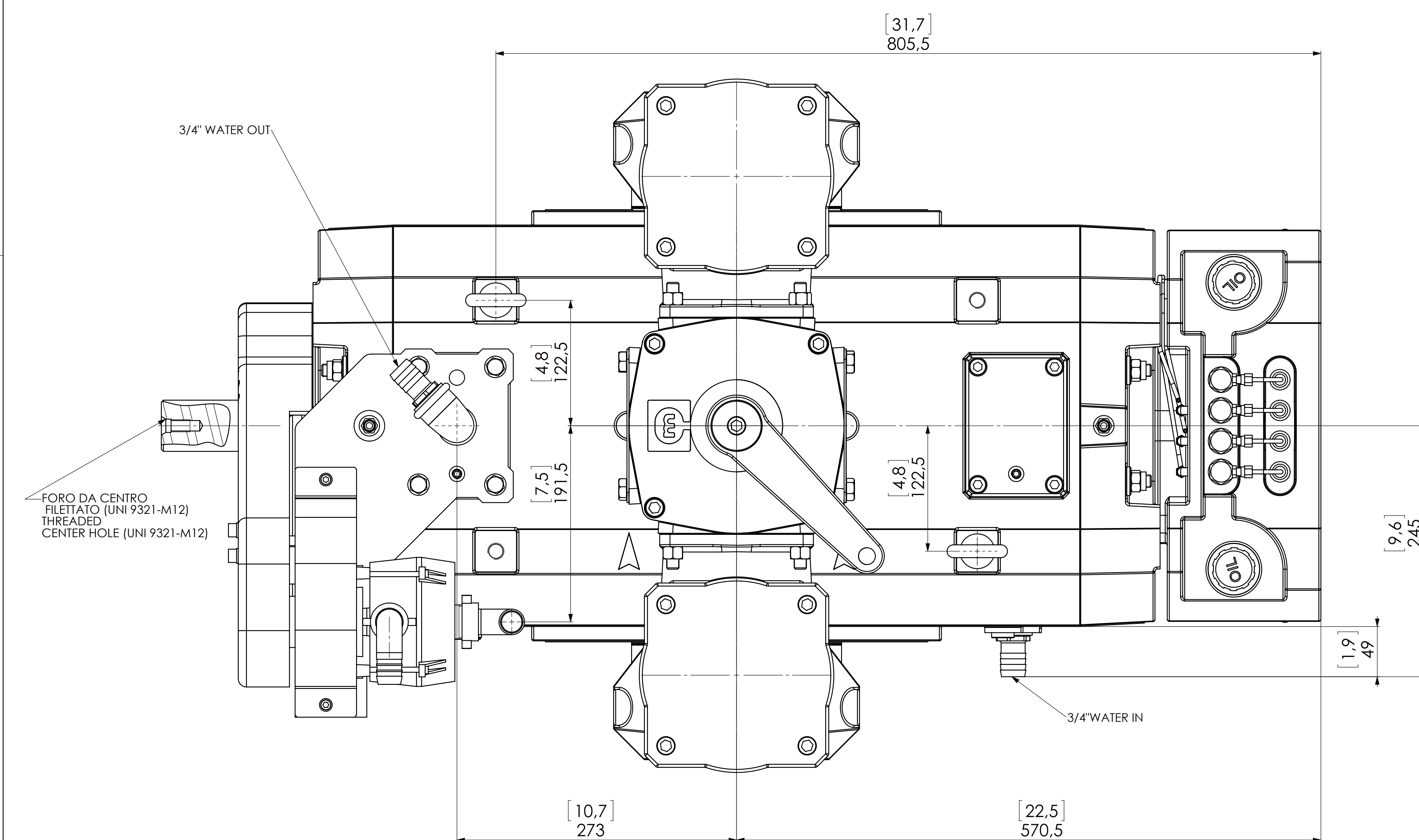
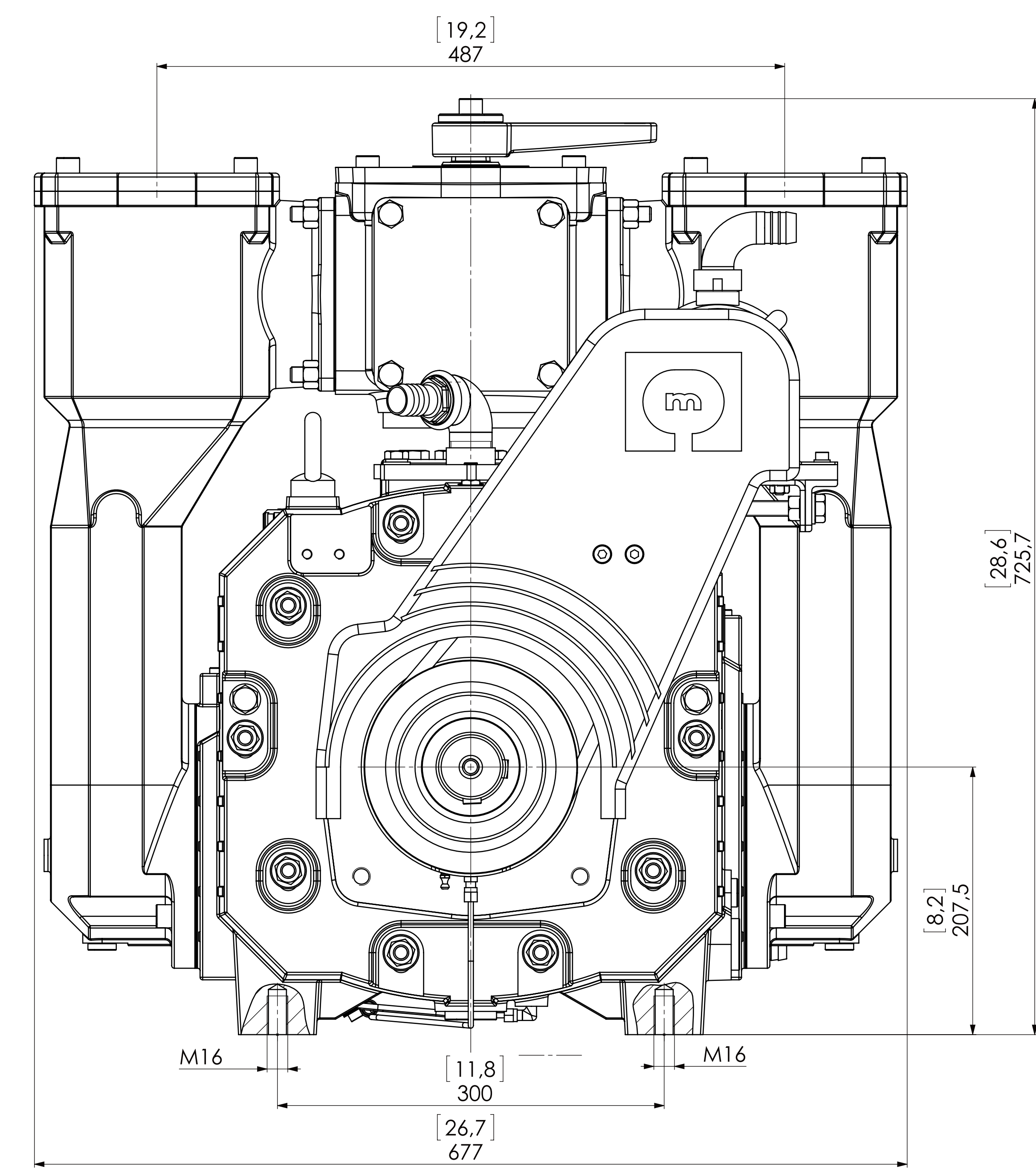
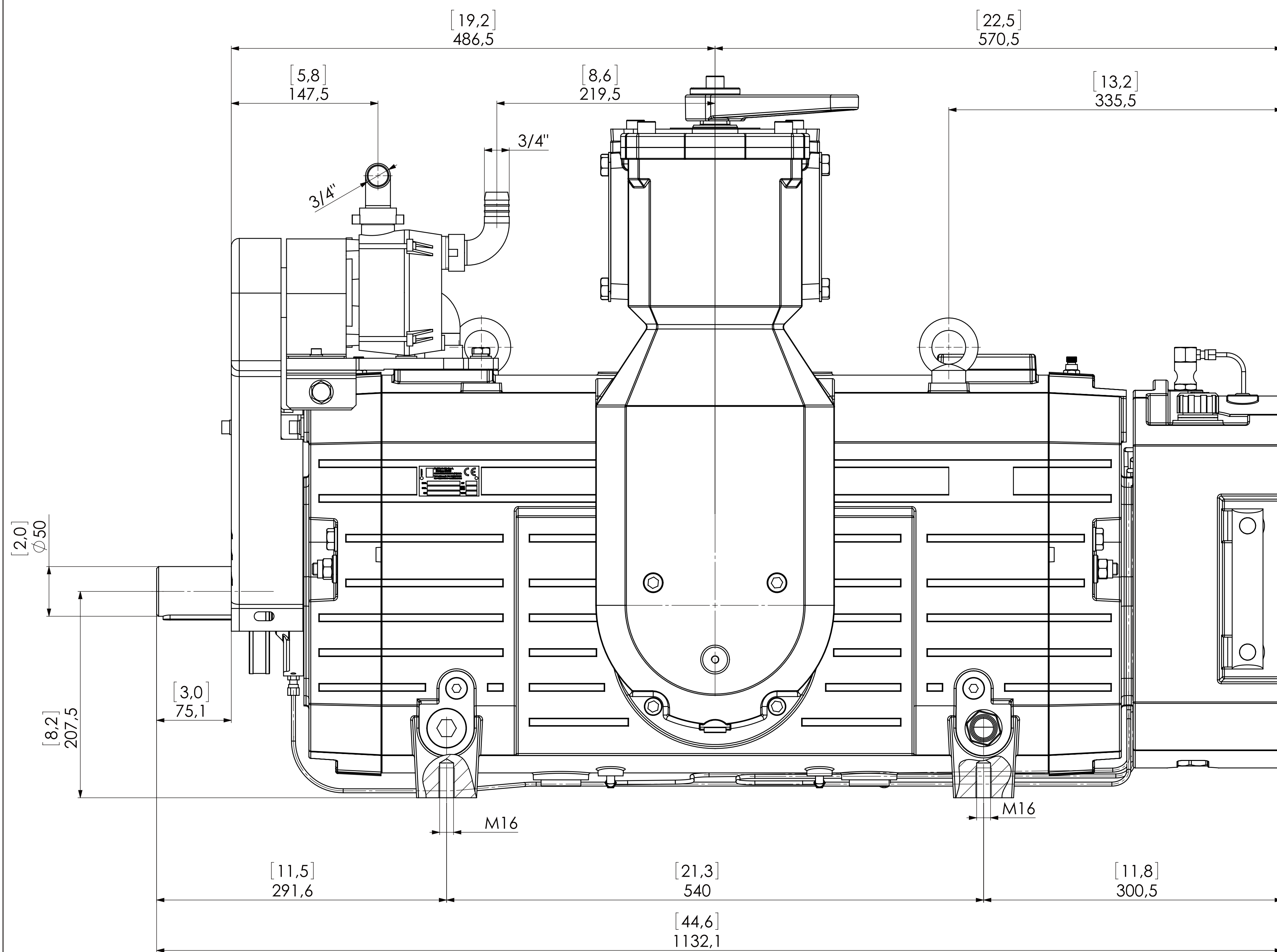


29.10	6.10091893-2	JOINT	DICHTUNG	2
29.9	47310190010	BOULON FILETE UNI 5911 M12x1,75	STIFTSCHRAUBE UNI 5911 M12x1,75	4
29.8	47320160022	ECROU UNI 5587 ALTO M12x1,75 - 8 (ØS) ZN-DEID	MUTTER UNI 5587 ALTO M12x1,75 - 8 (ØS) ZN-DEID	8
29.7	47300310316	VIS T.C.E.I. M12x1,75x35-	SCHRAUBE T.C.E.I. M12x1,75x35-8.	12
29.6	47350160028	RONDELLE CUIVRE 12x18sp=1,5	KUPFER SCHEIBE 12x18sp=1,5	4
29.5	47300310358	VIS UNI5931 T.C.E.I. M12x1,75x120	SCHRAUBE UNI5931 T.C.E.I. M12x1,75x120	4
29.4	6.925070005-1	BOUCHON 3/8"	STÖPSEL 3/8"	2
29.3	6.1009167-9-2	COUVERTURE DE CARTON	AUS PAPPE	2
29.2	47300250161	VIS UNI 5739 T.E. TF M12x1,75x16 - 8.8 ZN	SCHRAUBE UNI 5739 T.E. TF M12x1,75x16 - 8.8 ZN	8
29.1.1	47310040071	GOIJON M12x1,25x35 - 12.9	STIFT M12x1,25x35 - 12.9	1
29.1.0	6.526400000-1	COMMUTEUR AVEC BALL	SWITCH MIT BALL	1
29.1.9	47300310316	VIS T.C.E.I. M12x1,75x35-8.8ZN-D	SCHRAUBE T.C.E.I. M12x1,75x35-8.8ZN-D	5
29.1.8	6.964061016-2	RESSORT Ø=90x4x2,5	FEDER Ø=90x4x2,5	2
29.1.7	6.683000620-2	RONDELLE	SCHIEBE	1
29.1.6	6.1013393-7-2	ECROU M12x1,25 PF ZN	MUTTER M12x1,25 PF ZN	1
29.1.5	6.921003116-2	ANNEAU OR 51.51x44.45x3.53	O-RING 51.51x44.45x3.53	1
29.1.4	6.1009213-3-2	ANNEAU OR 3.53x196.44x203.50	O-RING 3.53x196.44x203.50	1
29.1.3	6.602400060-2	LEVIER	HEBEL	1
29.1.2	6.1009189-3-2	COUVERCLE	COVER	1
29.1.1	6.1009194-6-2	CORPS DE DEVIATEUR 5"	BODY VON SWITCH 5"	1
29.1	6.1009187-5-2	COMMUTATEUR	WECHSELN	1
29	6.861100520-1	COLLECTIONEURS KIT	KIT SAMMLER STORM	1
28.4	6.1012260-9-2	RACCORD 1/8" - Ø6	ANSCHLUS 1/8" - Ø6	1
28.3	6.924063050-2	RACCORD Ø4-1/8"	ANSCHLUS Ø4-1/8"	2
28.2	6.924061050-2	RACCORD 90° Ø4-1/8"	ANSCHLUS 90° Ø4-1/8"	2
28.1	6.652400330-1	POMPE A HUILE GAUCHE	ÖLUMPEN LINKS	1
28	6.822700400-1	KIT POMPE DE L'HUILE	OELPUMPEN KIT	1
27	6.684500030-2	BOUCHON	CAP	4
26	6.683001650-1	RONDELLE 13x28x5	SCHIEBE 13x28x5	20
25	6.680600970-1	JOINT	DICHTUNG	2
24	6.680600891-1	JOINT	DICHTUNG	47
23	6.680600881-1	JOINT	DICHTUNG	2
22	6.680600720-1	JOINT	DICHTUNG	1
21	6.676100770-1	TUYEAU DE L'HUILE	OELROHR	1
20	6.676100670-1	TUYAU DE L'HUILE	OELROHR	1
19	6.676100660-1	TUYAU DE L'HUILE	OELROHR	1
18	6.676100660-1	TUYAU DE L'HUILE	OELROHR	1
17	6.676100650-1	TUYAU DE L'HUILE	OELROHR	1
16	6.676100650-1	TUYAU DE L'HUILE	OELROHR	1
15	6.663400800-1	COUVERTURE D'ÉCHAPPEMENT	COVER AUSPUFF	1
14	6.663400780-1	FLASQUE	FLANSCH	1
13	6.663400760-1	FLASQUE	FLANSCH	1
12	6.663301650-1	COUVERTURE RESERVOIR D'HUILE	COVER ÖLTANK	1
11	6.662401020-1	CORPS DE PM3000 STORM	PM3000 STORM PUMPENGEHÄUSE	3
10	6.661300080-1	RÉSERVOIR D'HUILE	OIL TANK	1
9	6.657501250-1	PALETTE PM3000	PM3000 LAMELLE	6
8	6.644500000-2	FILTRE HUILE	ÖLFILTER	1
7	6.621018400-1	PIN POMPE A HUILE	PIN ÖLUMPEN	1
6	6.612041210-1	PIN DE POMPE A HUILE	PIN ÖLPUMPE	1
5	6.610402010-1	FLASQUE	FLANSCH	2
4.4	47300310316	VIS T.C.E.I. M12x1,75x35-8.8ZN-D	SCHRAUBE T.C.E.I. M12x1,75x35-8.8ZN-D	12
4.3	6.611007790-1	MOYEU ARRIERE	REAR HUB	1
4.2	6.611007700-1	MOYEU AVANT	FRONT HUB	1
4.1	6.653401270-1	ROTOR PM3000 STORM	ROTOR PM3000 STORM	1
4	6.470300380-1	ENSEMBLE PM3000 STORM GAUCHE ROT	ROTOR VERSAMMLUNG VERLASSEN	1
3	6.453300140-1	HUILEUR	OILER	4
2	6.1046708-7-2	PLAQUE	PLATE	1
1	6.1009213-3-2	ANNEAU OR 3.53x196.44x203.50	O-RING 3.53x196.44x203.50	1
N°	Codice / Code	DESCRIZIONE_FRANCESE	DESCRIZIONE_TEDESCO	Q.tà



KIT		
6.889901750-1	KIT TENUE STORM	STORM GASKETS KIT
CODE	ITA	ENG

PRODUZIONE SUPER (Industrial production)      DESCRIZIONE (Description)      CODICE MATERIALI/MATERIAL CODE  
 DESCRIZIONE (Description)      VEDI DISTINTA      CODICE MATERIALI/MATERIAL CODE  
**DEC.PM3000-SP-SX-P.ACQUA-COLLETTORE**  
 moro  
 LINEARI (Linear telegraph)      UNI - EN 22768-1-1      TP      Data: 09/06/2009  
 DACCORAMENTI (Accessories of parts)      UNI - EN 22768-1-1      TP      Data: 09/06/2009  
 COSTRUZIONI SALDATE (Welded constructions)      UNI - EN 13301-A      MA      Data: 09/06/2009  
 534 282      **6.211004670-1 / 01**  
 6.211004670-1      AO      14      2/3



PROIEZIONE SUPERIORE (Superior projection)		DIMENSIONI DIMENSIONI	
DESCRIZIONE (Description)		VEDI DISTINTA	
CODICE MATERIALE/MATERIAL CODE		534 282	
DEC.PM3000-SP-SX-P.ACQUA-COLLETTORE			
<p><b>m</b> moro</p> <p>TECNOLOGIE GENERALI (General technologies)</p> <p>LINEARI (Linear technologies)</p> <p>DISCOPORTAMENTO (Discopartamento)</p> <p>CONSTRUZIONI SALDATE (Welded constructions)</p>	<p>UNI - EN 22768-1-1</p> <p>UNI - EN 22768-1-1</p> <p>UNI - EN 13301-1</p>	<p>TP</p> <p>TP</p> <p>MAA</p>	<p>09/06/2009</p> <p>09/06/2009</p> <p>09/06/2009</p>
<p>534 282</p> <p>6.211004670-1 / 01</p>		<p>1.2.5</p> <p>3/3</p>	